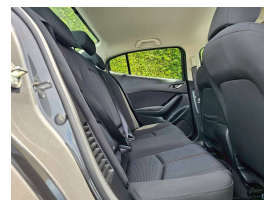
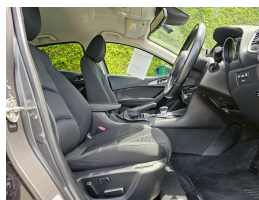
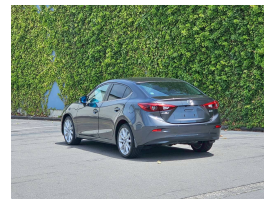
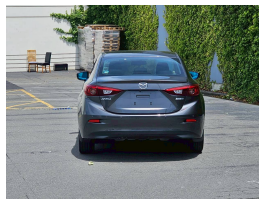
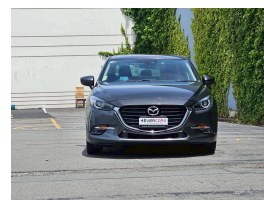


2017 Mazda Axela 2.0S Proactive Facelift Model



Vehicle Information

Cash Price
Include GST **\$16,985**

**Finance this
vehicle from only**

\$91

Per Week *

4EVERCARS
The home of quality cars

Gain peace of mind
with Mechanical
Breakdown
Insurance. Ask us
how.

4EVERCARS
The home of quality cars

Body
Sedan

Fuel Type
Hybrid

Engine Size
2000

Interior
Dark

Mileage

Reg No.
L3345

Odometer
120461

Exterior.
Gray

Ownership.

Transmission.
Automatic

Features

*Finance calculation based on a 60 month term, no deposit and with an example annual fixed interest rate of 12.95%. Actual interest rate may be higher or lower. Establishment fee of \$75 and Broker fee of \$295 are included in the calculations. Full term amount payable of \$50,121. Estimate only, not an offer of finance. Terms, conditions and lending criteria apply.

4EVERCARS
The home of quality cars

Phone 02102253262, Address: 580 Moorhouse Avenue
Email 4evercarschch@gmail.com